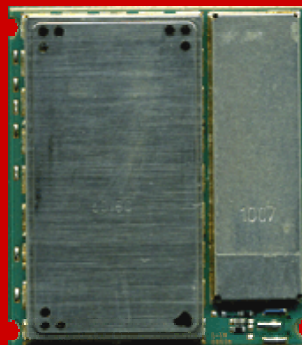




CINTERION
WIRELESS MODULES

EGS5

Version: 01.000
DocID: EGS5_rn_v01.000c



Release Notes

Document Name: **EGS5 Release Notes**

Version: **01.000**

Date: **August 12, 2009**

DocId: **EGS5_rn_v01.000c**

Status: **Confidential / Released**

GENERAL NOTES

THE PRODUCT INCLUDING THE SOFTWARE PROVIDED BY CINTERION WIRELESS MODULES GMBH ("CINTERION") WITH THE PRODUCT ("PRODUCT") IS DEEMED ACCEPTED BY RECIPIENT AND IS PROVIDED WITHOUT INTERFACE TO RECIPIENT'S PRODUCTS. THE DOCUMENTATION AND/OR PRODUCT ARE PROVIDED FOR TESTING, EVALUATION, INTEGRATION AND INFORMATION PURPOSES.

COPYRIGHTS

THE SOFTWARE OBTAINED FROM CINTERION TOGETHER WITH THE PRODUCT ("SOFTWARE") IS THE INTELLECTUAL PROPERTY OF CINTERION AND/OR ITS LICENSORS.

LIMITED LICENCE GRANT

SUBJECT TO THE TERMS AND CONDITIONS IN THIS AGREEMENT, THE RECIPIENT, ITS CUSTOMERS AND END-CUSTOMERS OF THE PRODUCT SHALL HAVE A NON-EXCLUSIVE RIGHT TO USE THE PRODUCT OBTAINED FROM CINTERION. THE RECIPIENT SHALL NOT AND SHALL CONTRACTUALLY BIND ITS CUSTOMERS AND THE END-CUSTOMERS NOT TO TRANSFER, COPY, MODIFY, TRANSLATE, REVERSE ENGINEER, CREATE DERIVATIVE WORKS, DISASSEMBLE OR DECOMPILE THE SOFTWARE OR OTHERWISE USE THE SOFTWARE EXCEPT AS SPECIFICALLY AUTHORIZED BY THE PURPOSE OF THIS AGREEMENT OR BY MANDATORY LAW. CINTERION SHALL BE A THIRD PARTY BENEFICIARY IN THE AGREEMENTS WITH CUSTOMERS AND END-CUSTOMERS REGARDING THE SOFTWARE.

ANY RIGHT, TITLE AND INTEREST IN AND TO THE PRODUCT, OTHER THAN THOSE EXPRESSLY GRANTED TO THE RECIPIENT UNDER THIS AGREEMENT, SHALL REMAIN VESTED WITH CINTERION OR ITS THIRD PARTY LICENSORS.

CINTERION IS NOT OBLIGED TO MAKE THE SOURCE CODE OF THE SOFTWARE AVAILABLE TO THE RECIPIENT.

DISCLAIMER OF WARRANTY

THE DOCUMENTATION AND/OR PRODUCT ARE PROVIDED ON AN "AS IS" BASIS ONLY AND MAY CONTAIN DEFICIENCIES OR INADEQUACIES. THE DOCUMENTATION AND/OR PRODUCT ARE PROVIDED WITHOUT WARRANTY OF ANY KIND, EXPRESS OR IMPLIED. TO THE MAXIMUM EXTENT PERMITTED BY APPLICABLE LAW, CINTERION FURTHER DISCLAIMS ALL WARRANTIES, INCLUDING WITHOUT LIMITATION ANY IMPLIED WARRANTIES OF MERCHANTABILITY, COMPLETENESS, FITNESS FOR A PARTICULAR PURPOSE AND NON-INFRINGEMENT OF THIRD-PARTY RIGHTS. THIS PRODUCT IS NOT INTENDED FOR USE IN LIFE SUPPORT APPLIANCES, DEVICES OR SYSTEMS WHERE A MALFUNCTION OF THE PRODUCT CAN REASONABLY BE EXPECTED TO RESULT IN PERSONAL INJURY. APPLICATIONS INCORPORATING THE DESCRIBED PRODUCT MUST BE DESIGNED TO BE IN ACCORDANCE WITH THE TECHNICAL SPECIFICATIONS PROVIDED IN THESE GUIDELINES. FAILURE TO COMPLY WITH ANY OF THE REQUIRED PROCEDURES CAN RESULT IN MALFUNCTIONS OR SERIOUS DISCREPANCIES IN RESULTS. FURTHERMORE, ALL SAFETY INSTRUCTIONS REGARDING THE USE OF MOBILE TECHNICAL SYSTEMS, INCLUDING GSM AND GPS PRODUCTS, WHICH ALSO APPLY TO CELLULAR PHONES MUST BE FOLLOWED. CINTERION CUSTOMERS USING THIS PRODUCT FOR USE IN ANY APPLICATIONS DO SO AT THEIR OWN RISK AND AGREE TO FULLY INDEMNIFY CINTERION FOR ANY DAMAGES RESULTING FROM ILLEGAL USE.

EXCLUSION OF LIABILITY

CINTERION, ITS LEGAL REPRESENTATIVES AND VICARIOUS AGENTS SHALL – IRRESPECTIVE OF THE LEGAL GROUND – ONLY BE LIABLE FOR DAMAGES IF THE DAMAGE WAS CAUSED THROUGH CULPABLE BREACH OF A MAJOR CONTRACTUAL OBLIGATION (CARDINAL DUTY), I.E. A DUTY THE FULFILMENT OF WHICH ALLOWS THE PROPER EXECUTION OF THE RESPECTIVE AGREEMENT IN THE FIRST PLACE OR THE BREACH OF WHICH PUTS THE ACHIEVEMENT OF THE PURPOSE OF THE AGREEMENT AT STAKE, RESPECTIVELY, AND ON THE FULFILMENT OF WHICH THE RECIPIENT THEREFORE MAY RELY ON OR WAS CAUSED BY GROSS NEGLIGENCE OR INTENTIONALLY. ANY FURTHER LIABILITY FOR DAMAGES SHALL – IRRESPECTIVE OF THE LEGAL GROUND – BE EXCLUDED. IN THE EVENT THAT CINTERION IS LIABLE FOR THE VIOLATION OF A MAJOR CONTRACTUAL OBLIGATION IN THE ABSENCE OF GROSS NEGLIGENCE OR WILFUL CONDUCT, SUCH LIABILITY FOR DAMAGE SHALL BE LIMITED TO AN EXTENT WHICH, AT THE TIME WHEN THE RESPECTIVE AGREEMENT IS CONCLUDED, CINTERION SHOULD NORMALLY EXPECT TO ARISE DUE TO CIRCUMSTANCES THAT THE PARTIES HAD KNOWLEDGE OF AT SUCH POINT IN TIME. CINTERION SHALL IN NO EVENT BE LIABLE FOR INDIRECT AND CONSEQUENTIAL DAMAGES OR LOSS OF PROFIT. CINTERION SHALL IN NO EVENT BE LIABLE FOR AN AMOUNT EXCEEDING € 20,000.00 PER EVENT OF DAMAGE. WITHIN THE BUSINESS RELATIONSHIP THE OVERALL LIABILITY SHALL BE LIMITED TO A TOTAL OF € 100,000.00. CLAIMS FOR DAMAGES SHALL BECOME TIME-BARRED AFTER ONE YEAR AS OF THE BEGINNING OF THE STATUTORY LIMITATION PERIOD. IRRESPECTIVE OF THE RECIPIENT'S KNOWLEDGE OR GROSS NEGLIGENT LACK OF KNOWLEDGE OF THE CIRCUMSTANCES GIVING RISE FOR A LIABILITY ANY CLAIMS SHALL BECOME TIME-BARRED AFTER FIVE YEARS AS OF THE LIABILITY AROSE. THE AFOREMENTIONED LIMITATION OR EXCLUSION OF LIABILITY SHALL NOT APPLY IN THE CASE OF CULPABLE INJURY TO LIFE, BODY OR HEALTH, IN CASE OF INTENTIONAL ACTS, UNDER THE LIABILITY PROVISIONS OF THE GERMAN PRODUCT LIABILITY ACT (*PRODUKTHAFTUNGSGESETZ*) OR IN CASE OF A CONTRACTUALLY AGREED OBLIGATION TO ASSUME LIABILITY IRRESPECTIVE OF ANY FAULT (GUARANTEE).

SECRECY

THE RECIPIENT UNDERTAKES FOR AN UNLIMITED PERIOD OF TIME TO OBSERVE SECRECY REGARDING ANY INFORMATION AND DATA PROVIDED TO HIM IN THE CONTEXT OF THE CONTRACTUAL RELATIONSHIP AND CLASSIFIED AS CONFIDENTIAL OR OTHERWISE RECOGNISABLE AS CONFIDENTIAL, IN PARTICULAR AS TRADE OR COMPANY SECRET AND – AS FAR AS NOT NECESSARY FOR THE ACHIEVEMENT OF THE PURPOSE OF THE CONTRACT – TO NEITHER RECORD NOR FORWARD TO THIRD PARTIES NOR USE IN ANY WAY. EMPLOYEES AND THIRD PARTIES INVOLVED SHALL BE BOUND TO OBSERVE THE ABOVE PROVISIONS.

MISCELLANEOUS

THE INTERPRETATION OF THIS GENERAL NOTE SHALL BE GOVERNED AND CONSTRUED ACCORDING TO GERMAN LAW WITHOUT REFERENCE TO ANY OTHER SUBSTANTIVE LAW. LEGAL VENUE FOR ALL DISPUTES ARISING FROM THIS AGREEMENT SHALL BE MUNICH, GERMANY. IN THE EVENT OF A CONFLICT BETWEEN THE PROVISIONS OF THIS AGREEMENT AND ANOTHER AGREEMENT REGARDING THE PRODUCT (EXCEPT THE GENERAL TERMS AND CONDITIONS OF CINTERION) THE OTHER AGREEMENT SHALL PREVAIL.

Copyright

Transmittal, reproduction, dissemination and/or editing of this document as well as utilization of its contents and communication thereof to others without express authorization are prohibited. Offenders will be held liable for payment of damages. All rights created by patent grant or registration of a utility model or design patent are reserved.

Copyright © Cinterion Wireless Modules GmbH 2009

Trademark Notice

Microsoft and Windows are either registered trademarks or trademarks of Microsoft Corporation in the United States and/or other countries. All other trademarks mentioned in this document are property of their respective owners

Contents

1	Preamble	5
1.1	Related Documents	5
2	Important Notes.....	6
3	Improved Features	6
4	Known Issues	6

1 Preamble

This Release Note describes the Cinterion wireless module
EGS5 01.000.

The document provides a list of changes made since release EGS5 00.850 and a brief description of known issues.

1.1 Related Documents

- [1] EGS5 AT Command Set, 01.000
- [2] EGS5 Hardware Interface Description, v01.000c
- [3] Multiplexer User's Guide, v12
- [4] Multiplexer Driver Developer's Guide, v12
- [5] Multiplexer Driver Installation Guide, v11
- [6] Remote SAT User's Guide, v03
- [7] Application Note 02: Audio Interface Design for GSM Applications, v07
- [8] Application Note 07: Rechargeable Lithium Batteries in GSM Applications, v05
- [9] Application Note 16: Updating Firmware, v09
- [10] Application Note 17: Over-the-Air Firmware Update, v03
- [11] Application Note 22: Using TTY / CTM Equipment, v02
- [12] Application Note 24: Application Developer's Guide, v07
- [13] Application Note 26: Power Supply Design for GSM Applications, v04
- [14] Application Note 32: Integrating USB into Applications, v04
- [15] Application Note 45: Jamming Detection – Radio Link Stability Monitor, v02
- [16] Application Note 46: Incremental Java Application Update, v02
- [17] Application Note 48: SMT Module Integration, v06
- [18] Java User's Guide for Cinterion Wireless Modules, v016
- [19] Java doc \wtk\doc\html\index.html

To visit the Cinterion Wireless Modules website you can use the following link:
<http://www.cinterion.com>

2 Important Notes

Feature	Brief description
Updating Java platform	<p>Please take care to use the latest Java SDK / WTK supplied with your EGS5 module. If you have jar and jad files created with previous SDKs / WTKs please compile new jar and jad files.</p> <p>This is particularly important for EGS5 01.000 because the Cinterion Java packages have been renamed from com.siemens.icm.* to com.cinterion.*</p>

3 Improved Features

Feature	Brief description
Power saving	The current consumption during CYCLIC SLEEP mode (AT+CFUN=7 or 9) is now fully in line with the values specified in [2].
AT^SMOND	The AT^SMOND command has been improved to show correct neighbour cell IDs.
AT^SCTM	The automatic thermal shutdown capability has been improved: If the board temperature threshold is exceeded during the first 120s after reboot, the module sends the URC "^SCTM_B: {-2/2}" and switches off as specified in [2].
Java System.out	Starting or terminating Java no longer resets the USB interface. This eliminates the need to close the USB COM port before starting or terminating Java.

4 Known Issues

AT command / feature	Brief description
Fax	Proper functioning of fax transmission cannot be guaranteed under all circumstances.
Remote SAT ER mode	If Explicit Response (ER) mode is activated (AT^SSTA=1) take care that any pending Proactive Command session is completed and notified with URC "^SSTN: 254" before using ATD.

AT command / feature	Brief description
Remote SAT, <statAddInfo>	The <statAddInfo> for the AT^SSTR command does not work on SAT Setup Call (AT^SSTR=16,<status>,,,<statAddInfo>).
AT^SRTC	If a voice call comes in while SAT tone is playing, the module starts playing the ringing tone when the SAT tone is finished even though the ringing tone is muted.
AT^SALS, AT+CCWA	If the presentation of “^SALS” URCs for dual line SIM cards and Call Waiting are activated, the “^SALS” URC does not show up for a waiting call. In this case, only the “+CCWA” URC will be displayed.
AT^SIND, “+CIEV: band” indicator, AT^SCFG, “Radio”Band” feature	The “Radio”Band” parameter <rbc> of the AT^SCFG command and the “+CIEV: band” indicator of the AT^SIND command are specified to output the same value. However, if <rbc> equals the maximum value 15 (quadband) the “band” URC and the AT^SIND read command show a lower value.
AT+CALA, AT+IPR=0	Wakeup into Airplane mode (AT+CALA alarm followed by module switch-off) cannot be used if autobauding (AT+IPR=0) is enabled. Before setting the function Wakeup into Airplane mode ensure that the module is configured for a fixed bit rate (AT+IPR≠0). Reminder messages (AT+CALA alarm set without switching off the module) are not concerned and will work properly.
ATZ / AT+CSCB	ATZ resets all user defined cell broadcast message indication settings specified with AT+CSCB to their factory defaults.
AT^SPBS	If the maximum number of 255 phonebook entries are stored on a SIM card, the browse command AT^SPBS sometimes does not step through all of these phonebook entries.
Removing the SIM during operation	Please avoid removing the SIM quickly after SIM PIN authentication, i.e. at a time when the ME is initially loading data from the SIM. In particular, if the SIM is removed when AT commands that require SIM access (such as phonebook, SMS or Remote SAT commands) are already being processed during SIM initialization it is strongly recommended to reset the module. The best approach is not to remove the SIM before the URCs “^SSIM Ready” and/or the “+CIEV: simstatus” notify that the initial process of reading SIM data after SIM PIN authentication has completed.

AT command / feature	Brief description
Java: Send buffer size	It is not recommended to change the size of internal socket buffer (send buffer) by means of the socket function setsockopt() with the option SNDBUF. The internal socket buffer is set to optimal size by default, any change of this value can cause a loss of data.
GPRS PPP connection setup	<p>In rare cases, when using other systems than MS Windows the GPRS connection setup may fail due to not having received the GPRS network response to the Activate PDP context Request in time, i.e. within the first three IPCP-Configure-Requests sent by the PPP client. In this case, the module transmits an IPCP-Configure-Reject by default.</p> <p>The problem can be circumvented by extending the retransmission timeout between IPCP-Configure-Requests or to request additional IPCP parameters to avoid DNS address reject.</p>
HTTP Post	To post large amounts of data with HTTP be sure that URC Mode for Internet Service AT commands is enabled (AT^SCFG="Tcp/WithURCs",on). As specified in [1] data shall be transferred in data packets of max. 1500 bytes. During transfer, always wait for the "^SISW: x,1" URC before sending the next data packet. Please note that Polling Mode is currently not usable for posting large data with HTTP.
"+CREG" URCs	<p>If SIM PIN protection is disabled and AT+COPS is configured for automatic operator selection it is possible that the URCs "+CREG: <stat>" or "+CREG: <stat>[, <lac>, <ci>]" do not show up after restarting the module. This happens for example when the module registers to the network before the "^SYSSTART" URC is issued.</p> <p>To verify the network registration, please use the AT+CREG? read command.</p>
IGT timing if charger is connected to VCHARGE	If a charger is connected to the VCHARGE pin, we recommend that IGT be asserted for at least 1000 ms to enable the module to properly start into Normal mode. Otherwise, if IGT is held low for less than 1000ms, the module might only start into Charge-only mode.
Shutdown on IGT	The feature AT^SCFG="MEShutdown/OnIgnition" can only be enabled if USB is not connected.
Airplane Mode	In very rare cases it is possible that the module unintentionally starts into Airplane Mode instead of Normal Mode. The mode is either indicated by the "^SYSSTART AIRPLANE MODE" URC or must be requested, if startup URCs, such as "^SYSSTART" or "SYSSTART AIRPLANE MODE", are not output because of Autobauding (AT+IPR=0).

AT command / feature	Brief description
	<p>It is therefore recommended to detect the Airplane Mode configuration each time when initializing the module and to switch it off if the response is “on”.</p> <p>1. Requesting the current state: AT^SCFG="MEopMode/Airplane" ^SCFG: "MEopMode/Airplane", "on" OK</p> <p>2. Switching off Airplane Mode AT^SCFG="MEopMode/Airplane/OnStart", "off" ^SCFG: "MEopMode/Airplane/OnStart", "off" OK AT^SCFG="MEopMode/Airplane", "off" ^SCFG: "MEopMode/Airplane", "off" OK ^SYSSTART</p> <p>The “^SYSSTART” URC shows that the module instantly goes into Normal Mode.</p>
EGS5 modules with Customer IMEI	<p>This note applies only to EGS5 modules with Customer IMEI mode:</p> <p>After the IMEI was written the module will go into Airplane mode when restarted. Therefore, after restarting the module, use the AT^SCFG command and deactivate the parameter "MEopMode/Airplane/OnStart":</p> <p>AT^SCFG="MEopMode/Airplane/OnStart", "off" ^SCFG: "MEopMode/Airplane/OnStart", "off" OK</p> <p>AT commands and further details on how to write the Customer IMEI can be found in “Application Note 21 - Implementing Customer IMEI”. This document is supplied only with EGS5 modules preconfigured for Customer IMEI mode.</p>
USB hot plugging	<p>EGS5 supports USB hot plugging. However, the internal power manager is not notified of this action. This prevents the module from entering sleep mode. In other words: The module will no longer enter sleep mode once USB has been unplugged.</p>
AD converter / AT^SRADC	<p>Please use only one of the two AD converter channels at a time. In rare cases it may happen that the values of the two channels are interfering each other if both channels are opened at the same time.</p>